



residency  
**durga**

---

2-BHK Spacious Flats



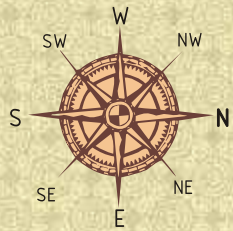
**Presenting Durga Residency, elegant living spaces that will be a delight to live-in.**

A residential project, surrounded by large-scale bungalow & apartment development, **Durga Residency** offers an excellent location to reside in Manjalpur. The thoughtfully planned spacious 2-BHK Flats offer excellent living spaces, with ample natural light & aeration, together with sufficient privacy.

No wonder, **Durga Residency** shall be just the right destination for a peaceful dream abode for your family!



# Typical Floor Plan



B-BLOCK

A-BLOCK

# Specifications

**STRUCTURE:** Well designed RCC frame structure using good quality material as per Structural Engineer's Design and Specifications.

**FLOORING:** Porcelain Tile Flooring with Skirting in entire Flat.

**KITCHEN:** Good Quality Black Granite Platform and SS Sink, Glazed Tiles Dedo upto Lintel Level.

**DOORS:** Decorative Main Door with standard Safety Lock and Fittings, other internal Doors are Flush Doors with Oil Paint.

**WINDOWS:** Aluminum Section Windows with Clear Glass

**WALLS:** Internal Walls Painted with Distemper Paint, External Walls with waterproof Paint.

**ELECTRIFICATION:** Good Quality ISI Mark concealed Copper wiring with elegant Switches.

**TOILETS:** Parryware Sanitaryware, Ceramic Tiles Flooring, Door height glazed Tiles Dedo.

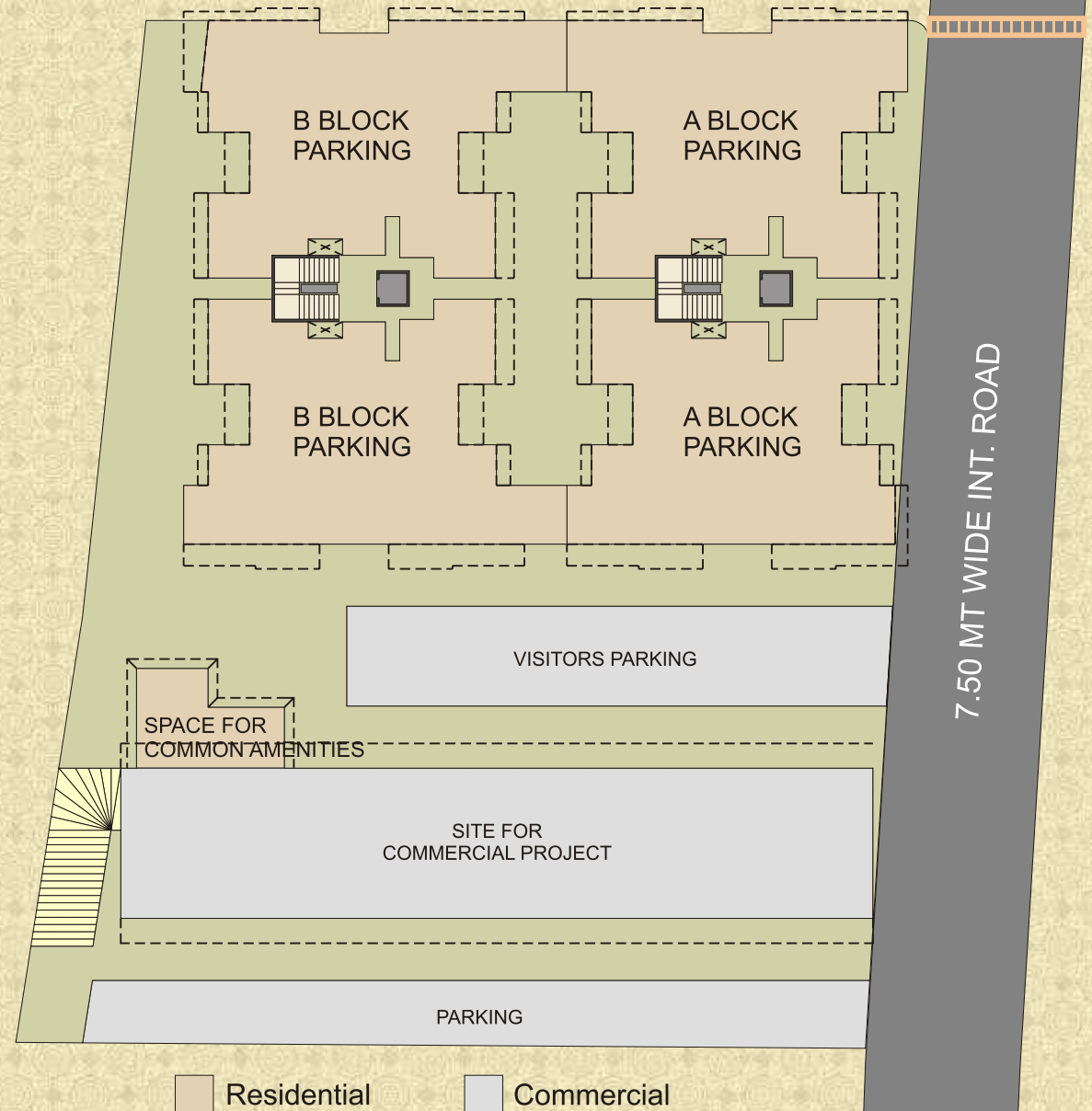
**PLUMBING:** Concealed GI Plumbing with good quality C.P.Fittings.

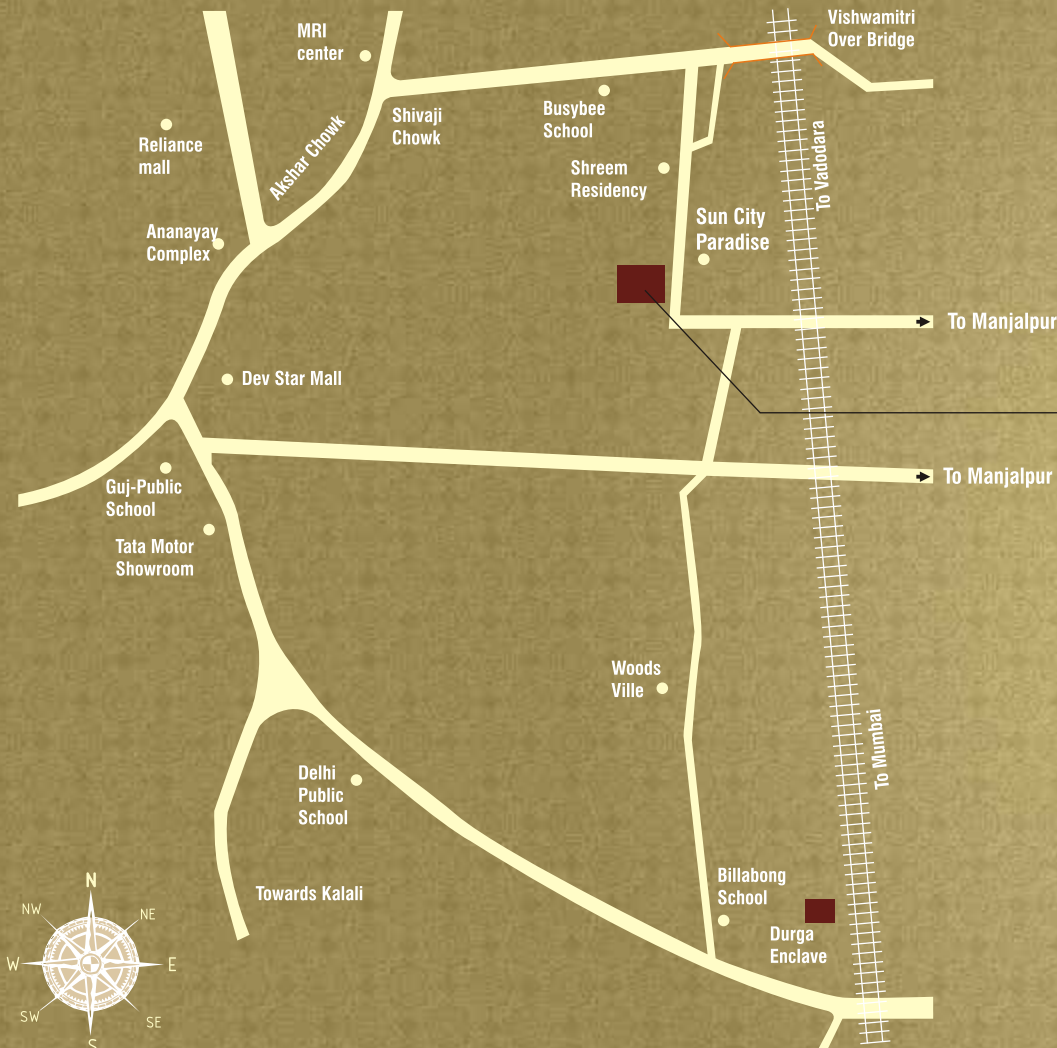




## Common Facilities

- Building Compound Wall with Decorative Main Gate
- Underground and Overhead Water Tank for 24 Hour Water supply
- Common Amenities Area
- Generator for Lifts and Common Passage Lights
- Anti Termite Treatment at ground level
- Adequate Covered Parking
- Cemented Roads with Paver Blocks






residency  
durga

**Site Address:**

Opp. Suncity Paradise,  
B/h Vishwamitri Township,  
Nr. Vishwamitri Overbridge,  
Mujmahuda, Vadodra-390011

**Developers:**

Trinity Land Developers  
M: 9825128748

**Architect:**

Advance Engineering Architects

**Please Note:**

• Possession will be given after one month of settlement of all accounts. • Documentation charges, stamp duty & common maintenance charges will be extra. • Extra work shall be executed after making full payment in advance. • Continuous default payments leads to cancellation. • Developers shall have the right to make any modifications in the scheme without any prior notice and the same shall be binding to all. • In case of delay in water supply, light connection, drainage work by authority, developers will not be responsible. • Any plans, specifications or information in this brochure can not form part of any offer, contract or agreement.